



NAVIGARE CHARTER FLEET 2019

Annex 1- ASTREA 42 QUATUOR- BVI

SPECIFICATIONS

ASTRÉA 42 QUATUOR

LOA (meter)	12,58
Beam (meter)	7,20
Draft (meter)	1,25
Light Displacement (kg)	11 580
Engine (Hp)	2 x 40
Sail area main & furling genoa (m ²)	104
Cabins	4+1+1
Toilettes	4
Steering wheels	1
Registered number of guests (RNOG)	8+2+2
Diesel tank (liter)	470
Water tank (liter)	2 x 350

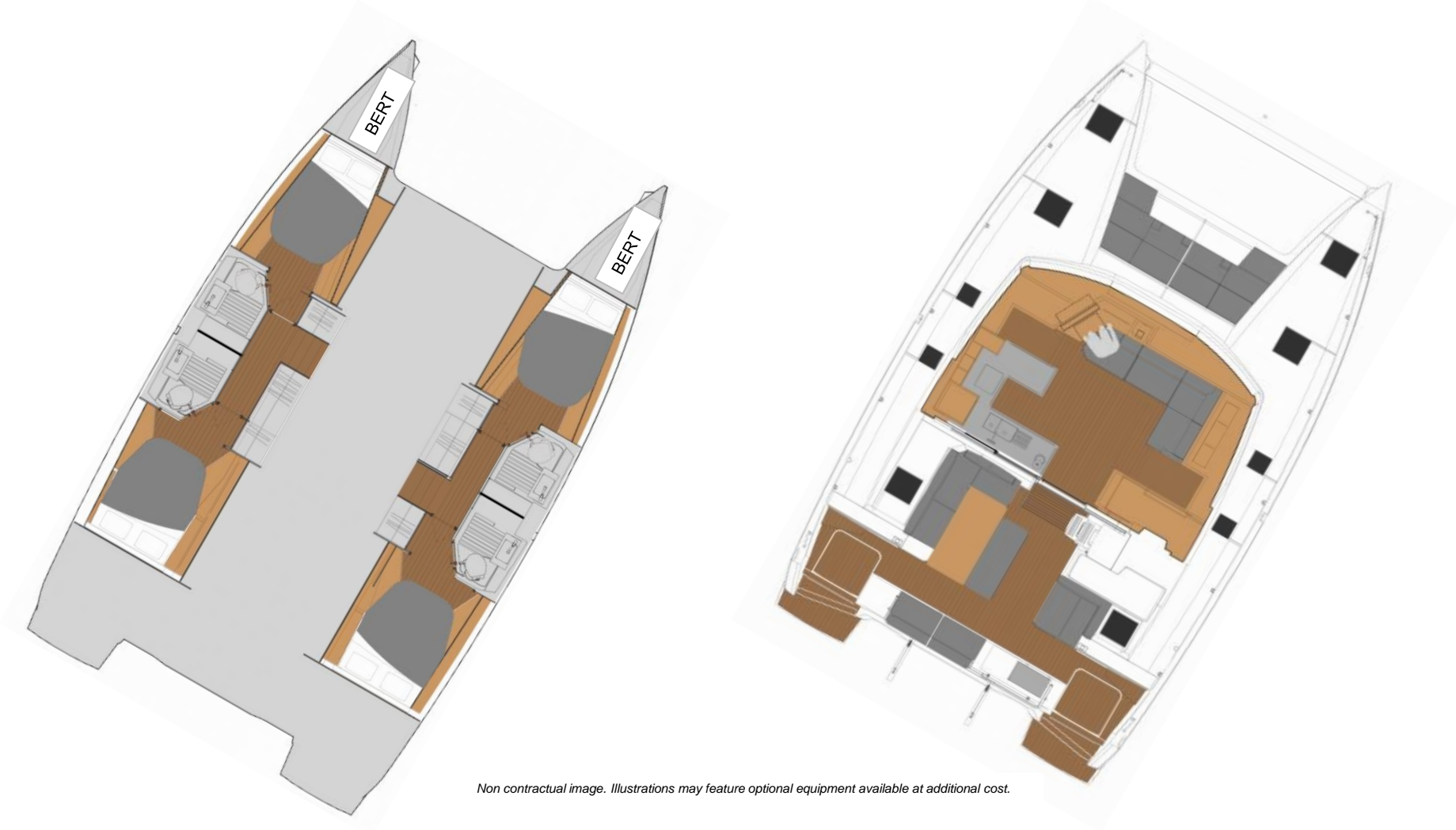


Non contractual image. Illustrations may feature optional equipment available at additional cost.



Commissioning - Cargo ship Delivery & Registration included

ASTREA 42 QUATOUR



Non contractual image. Illustrations may feature optional equipment available at additional cost.



YARD EQUIPMENT

STANDARD EQUIPMENT

Alpi woodworking
Salon / Cabins flooring: laminated floor
Synthetic resin worksurface
1 stainless steel hob with 3 gas burners with saucepan holder
2 stainless steel sinks
Pressurised hot and cold fresh water by mixer tap
1 large low cupboard under sink
1 dustbin by vertical access
3 drawers, 1 of which with cutlery tray
1 storage cupboard on worksurface
1 x 144L cold storage with drawers using 12V cold system
1 large corner cupboard above fridge unit
Holding tank 90L in each hull
Electric drainage pump
Mixing valve tap for shower
Manual marine toilet
Cockpit fully protected by a rigid bimini.
Hot water shower in the stbd transom
Teak cockpit table for 8 persons
Helmsman double seat
Instrument console
2 fixed blades propellers
Complete engine panel and dual controls at helm station
1 Fuel tank 470L in port hull
2 x fresh water tanks with electric gauge
1 electric pump and pressure accumulator
1 x 40L water-heater
1 electric bilge pump (2m³/h) in each engine hold
1 electric pump (2m³/h) in each hull.
1 manual exterior bilge pump
2 x 115A/12V engine alternators
1 port set of service/engine AGM batteries 345Ah
1 x 50Ah starboard AGM engine battery
1 V.H.F. antenna at the top of the mast
Mast and boom in anodised aluminium

Ball bearing mainsail luff car
1 tackle on mainsail halyard
1 boom topping lift
3 reef pennants. Automatic n°1 reef line
1 genoa & 1 spi halyard
Lazy jacks
Navigation, running and mooring lights
Deck lighting
Full batten CSR mainsail
Roller genoa fuller
1 ball bearing traveller for mainsheet
2 size 50 Self-tailing winches
1 size 45 Self-tailing winch
Compass
2 s/s tender davits with 1 x 40 winch on port side
1000W electric windlass

OPTIONS INCLUDED

2 VOLVO 40HP D2 engines
Taupe Pvc outdoor upholstery
Taupe Pvc indoor upholstery
Manual carbon gangway
Bimini for helm station
Outdoor cushions (cockpit + lounge deck)
Outdoor foredeck cushions
Synthetic teak floor transoms and cockpit
Salon curtains
Fitting out port forepeak
Salon table convertible into berth
Second VHF AIS helmstation
12V 130L Fridge
Gas oven
12V fan x 6
Additional AGM battery 150A suppl.

Interior 12V outlet
Cockpit fridge
110V Water heater
110V main grid 110V 60HZ
2000W Inverter/charger / 110V 60HZ
7.5KW 110V 60HZ genset
Air conditioning 110V 60HZ main syst.

PACKS INCLUDED

OCEANIC VERSION

Curtains in cabins
Mooring kit + 4 fenders
CST mainsail full batten
Lazy jack
Electrical windlass (1000 Watts)
VHF mast head antenna prewired
Double clutche for reefs 2 and 3
Interior 12V outlet and waterproof exterior 12V outlet
Deck shower (cold water)
Auto. switch for bilge pumps
Lazy bag
Dralon protective cover for wheel
1 Electric winch for mainsail
Interior courtesy LED lighting
Pressurized seawater system
Fusion audio pack Bluetooth 4 Sp
220V main grid 220v 50hz
2000W Inverter/charger / 220V 50hz

GARMIN Pack 1

Autopilot, VHF, AIS
GPS 7410, 2 x multi GMI20

NAVIGARE YACHTING
EXPERIENCE TOGETHER



NAVIGARE EQUIPMENT

Windex	Seacharts (full set)	Navigare wifi system 3G/4G
Antifouling with double epoxy treatment	Navigational equipment (traveller, ruler, pen etc.)	BBQ grill, LPG
First filling & engine service	Binoculars	Fitting out stbd forepeak
Spare fuel cannister, 5 liter	Loggbok	
	Local waters pilot	
Mooringrope 2*15 m, 2*20 m & 1*50 m		
Fenders * 8	Nationality flag + Navigare flag	
Baloon fender	Signal flags	
Gangway	Torch (flash light) w. spare batteries	
DELTA anchor & Anchor connector	Flashlight 12 volt	
Anchor chain 80 meter	Mask, snorkel and fins	
Anchor thief	Bosun`s chair	
Hook for releaving anchor windlass + 4m rope	Spares; engine oil, 3 * filter, engine belt & impeller	
Second anchor & 10 + 2 m chain w. Schackles.	Toolbox with tools	
Boat hook		
Power cord for shore supply (30 m)	Galley and cooking equipment	
	Glas, wine glas & cups (RNOG)	
Life raft. (RNOG)	Knives, forks and spoons (RNOG)	
Horse shoe life bouy, holder & light	Plates - big, small and deep (RNOG)	
Rescue sling (Life sling)	Gasol bottles * 2	
Emergency flares	Sheets, pillowcases, towels & kitchen towels (RNOG)	
Fire extinguishers	Blankets and pillows (RNOG)	
Wire cutter	Hangers (cabins x 6)	
Safety harnesses + rope with hooks (RNOG / 2)		
Lifewest (RNOG + 1 junior)	Water hose 15 m, with watergun	
Radar reflector	Deck brush and bucket	
Wooden plugs	Toilet brush (nr of WC)	
Fog horn	Dustbin (nr of WC)	
First aid kit	Cleaing equipment (interior)	
	Funnel, Sponge and container	